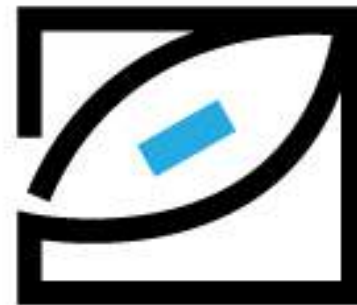


A bespoke design concept

*“The art of mindful attention
opens us up to live more
creatively and peacefully. I
never fully understood this
until I moved to Greece.”* Toni
Atkinson, Founder, My
Mykonos Eye.



MY MYKONOS EYE

“Two elements are needed to form a truth – a fact and an abstraction.” – Remy de Gourmont

Mykonos, and the 220 surrounding Cycladic islands are miraculous canvases for spectacular natural and man-made works of art. Shaped by the elements, mythology, history, and now tourism, there is something for everyone in the form of creative expression. With a distinctive style befitting the landscape, the Greeks have clearly and beautifully communicated and developed design elements showcasing their architecture, interior decoration, and art.

The essence of My Mykonos Eye is to present a mystical, contemporary, and somewhat abstract view of the islands, offering an evocative and symbolic design concept in the form of limited edition bespoke prints, as seen through the fresh eyes of a relative newcomer to this abundantly creative landscape.

Toni Atkinson's first collection of unique photographic images, printed on traditional and state of the art materials is designed to reflect the many hours she has spent hiking to remote and relatively unknown areas of Mykonos and some of the neighboring islands. The esoteric geological landscape has had a deep impact, and her photographic view is reminiscent of abstract expressionist artworks.

The My Mykonos Eye concept is designed to tailor artwork locally and internationally for homes, villas, hotels, restaurants, beach clubs, bars and offices, so that everyone can enjoy the incredible splendor of this elementally magical landscape.



Background



Toni Atkinson fell in love with Greece the very first time she visited Corfu in 1984, when she was eighteen years old. But life took her in another direction and she didn't return for 31 years. This time, she vowed to come back and within four years, and many visits in between, Toni settled on the island of Mykonos in the Cyclades.

Throughout her life she has lived in Australia, England, Monaco and Spain, but nowhere captured her heart the way Greece has.

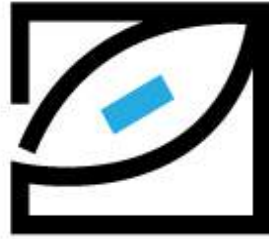
“This is a magical and mythological land, where age old traditions and beliefs are embedded in the fabric of society and those that inhabit it. I really feel at home here, for the very first time in my life.” Toni believes Greece is where she belongs and that the journey to get here was necessary for her to fully recognise this.

After her first return visit to Greece in 2015 the one thing that struck her was that she had never taken so many photographs during a holiday. “I was in Santorini and my senses were singing. Art was everywhere, in nature, architecture, people, music and food. My sense of awareness and mindfulness was elevated like never before.”

Since moving to Mykonos, and exploring many remote and little-known areas of the island on foot, throughout the seasons, Toni's love affair with capturing contrasting images of the island has blossomed. “After discovering a tiny geological site rich in Mykonian history I felt compelled to photograph the granite and volcanic rocks resplendent with an assortment of minerals. These natural works of art radiate colour as the azure Aegean sea gently washes over them. This is where the idea for My Mykonos Eye took seed.”

There are many wonderfully creative and talented photographers on the island, all with their own special perspective. But Toni recognised her ‘eye’, or view of Mykonos, was a little more abstract, and she felt compelled to tell an alternate story of the famous island with her abstract photographs. “Many of the mineral embedded and lichen covered rock images I'd captured reminded me of expressionist paintings so I printed one for my house. It had such an impact I got really excited about producing more. I started to dream about seeing my work on the walls of Mykonian villas and hotel rooms, and people's homes all around the world. The colors are so resplendent, and are a direct reflection of the Cycladic landscape. I thought I could offer an alternative and luminous design option to bring the outside in.”

After researching the latest high-tech image printing and mounting options Toni began to produce her first limited edition collection 'You Rock' Cyclades.



MY MYKONOS EYE

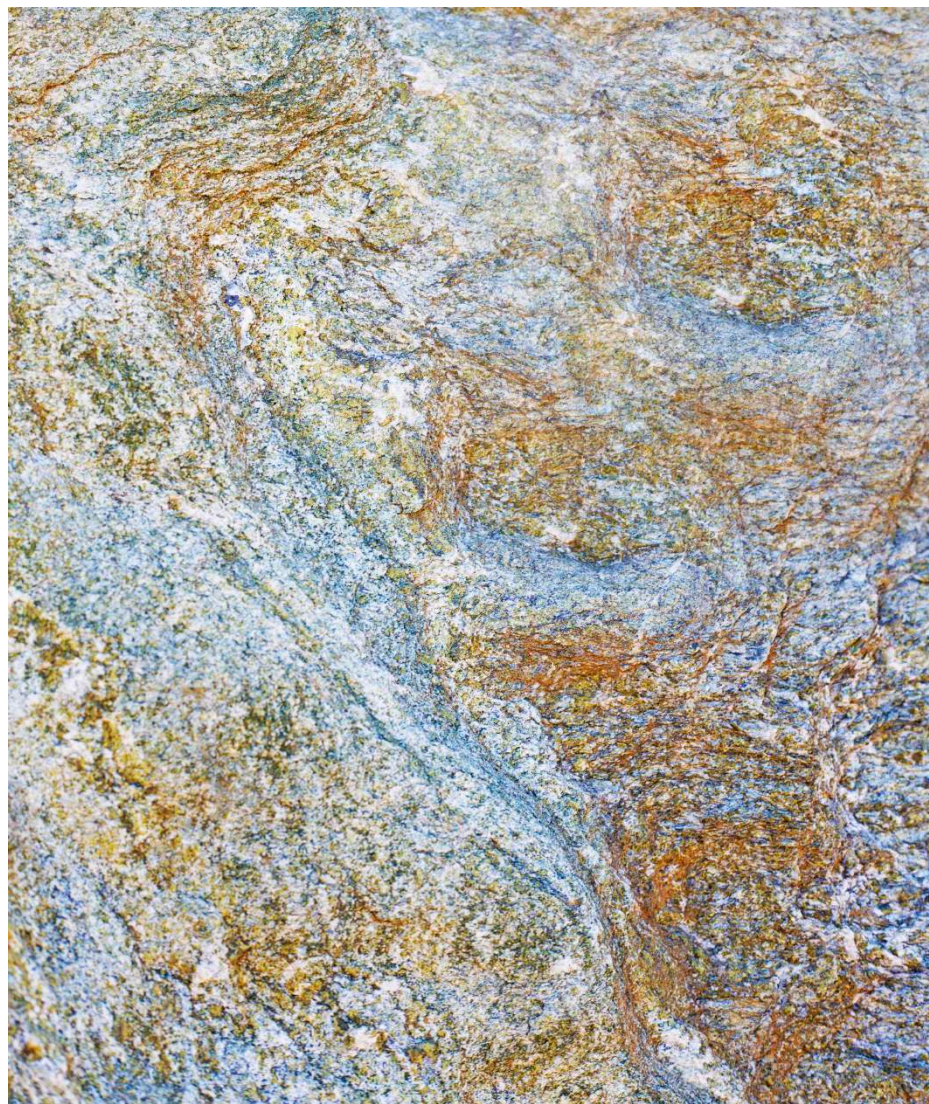
**'YOU ROCK' CYCLADES
Collection**



Aegean Mirror. A rockscape in Tinos mirrors the colours of the beach it adorns. *Maximum recommended print size 80cm x 120cm. This image can be printed on Japanese Washi paper in 33cm x 48cm and 66cm x 96cm*



A cubism inspired Granite and Chalcopyrite work found in the valleys of Mykonos.
*Maximum recommended print size 50cm x 70cm. This image can be printed on
Japanese Washi paper in 33cm x 48cm*



Tinos Mermaid. A mythological mermaid gently weaves her way through the Azurite rocks of Tinos. *Maximum recommended print size 90cm x 76cm. This image can be printed on Japanese Washi paper in 33cm x 48cm and 66cm x 96cm*



Magical Milos. Hidden under a ledge by the sea, this natural watercolour image painted by mother nature contains the colours of Sulphur and Manganese Ore. *Maximum recommended print size 120cm x 80cm. This image can be printed on Japanese Washi paper in 33cm x 48cm and 66cm x 96cm*



Milos Storm. Manganese Ore and Sulphur paint the rocks with this stormy scene of Milos Island. *Maximum recommended print size 120cm x 80cm. This image can be printed on Japanese Washi paper in 33cm x 48cm and 66cm x 96cm*



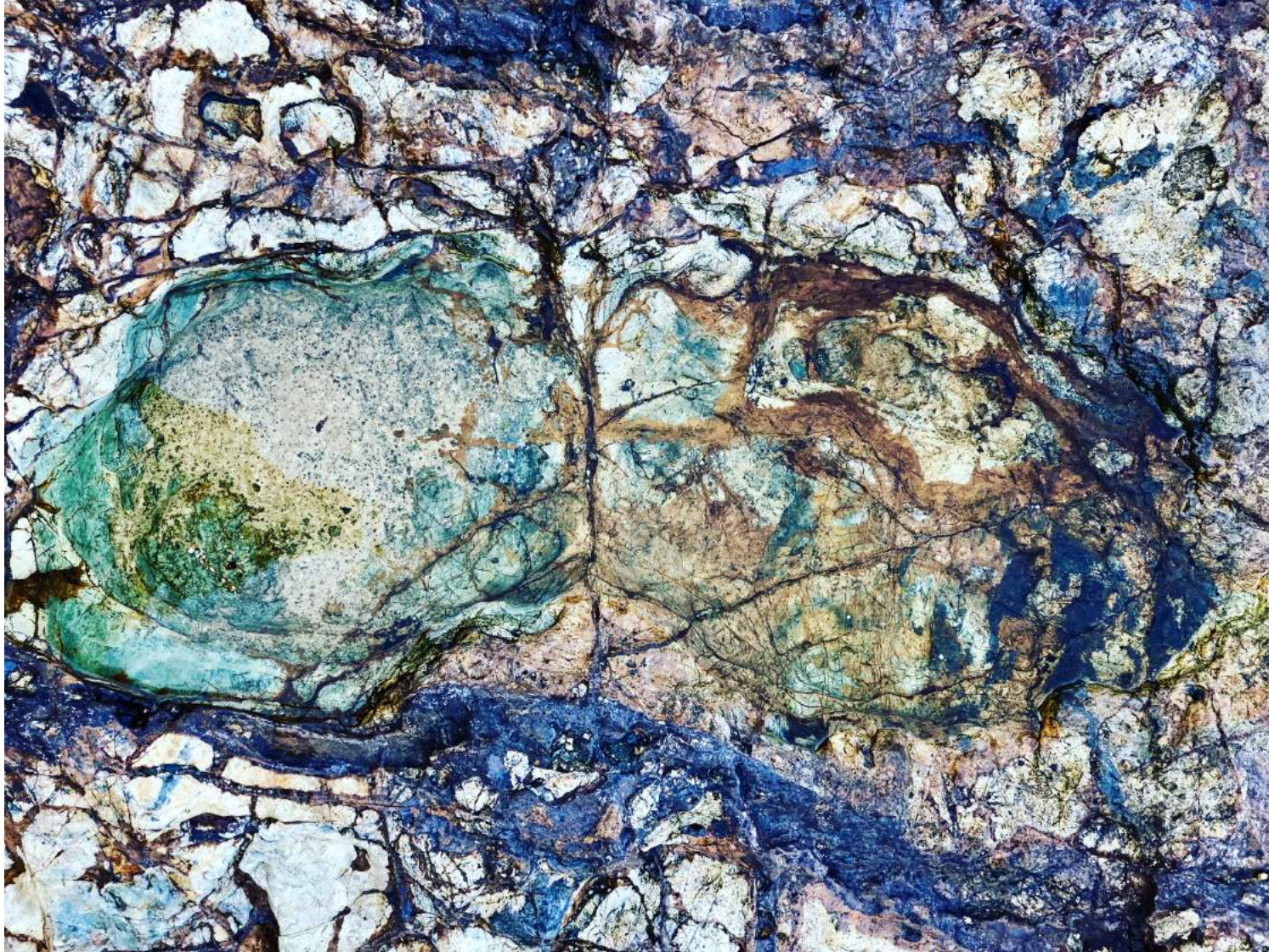
Milos Gorge. The Manganese Ore and Sulphur embeded rocks of Milos echo the unique island's landscape. *Maximum recommended print size 80cm x 60cm. This image can be printed on Japanese Washi paper in 33cm x 48cm and 66cm x 96cm*



*Manganese Ore and Sulphur paint the rocks of Milos Island.
Maximum recommended print size 90cm x 60cm. This image can be printed on Japanese
Washi paper in 33cm x 48cm*



Lady with the Golden Hair. Colours of the Cyclades are represented throughout in this mineral rich Granite rock. *Maximum recommended print size 60cm x 80cm. This image can be printed on Japanese Washi paper in 33cm x 48cm and 66cm x 96cm*



Azurite Rock Pool. This mineral resplendent rockpool , reminiscent of an octopus, sits calmly at the edge of the sea waiting to be filled each day. *Maximum recommended print size 100cm x 75cm. This image can be printed on Japanese Washi paper in 80cm x 64cm and 66cm x 96cm*



Cyclades Kalidascope. A kalidascope of mineral colours glimmer brilliantly beneath the gentle Aegean. Maximum recommended print size 90cm x 75cm. This image can be printed on Japanese Washi paper in 33cm x 48cm and 66cm x 96cm



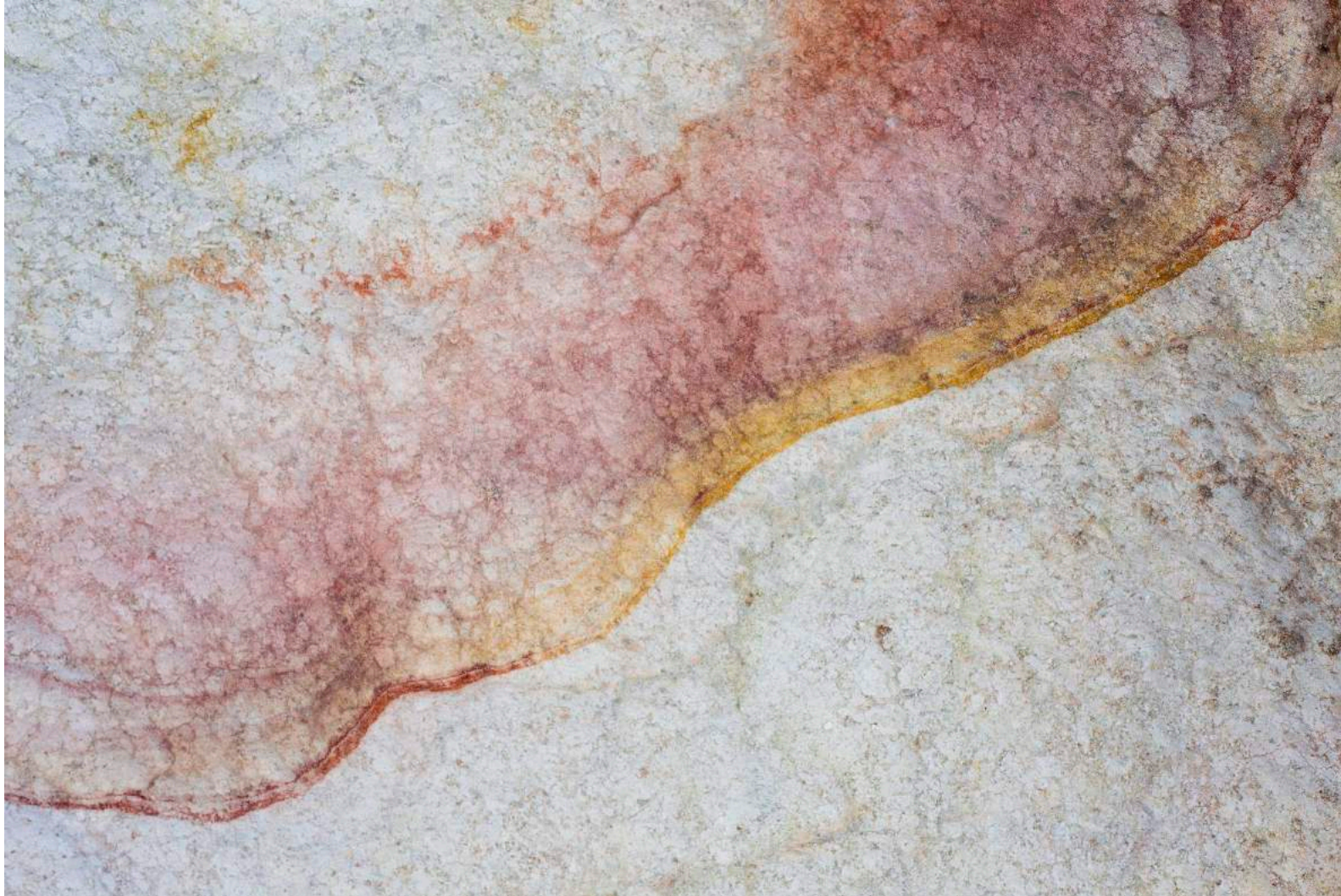
Watercolour Rock Art. Quartz and minerals combine to produce a literal abstract watercolour. *Maximum recommended print size 120cm x 80cm. This image can be printed on Japanese Washi paper in 33cm x 48cm and 66cm x 96cm*



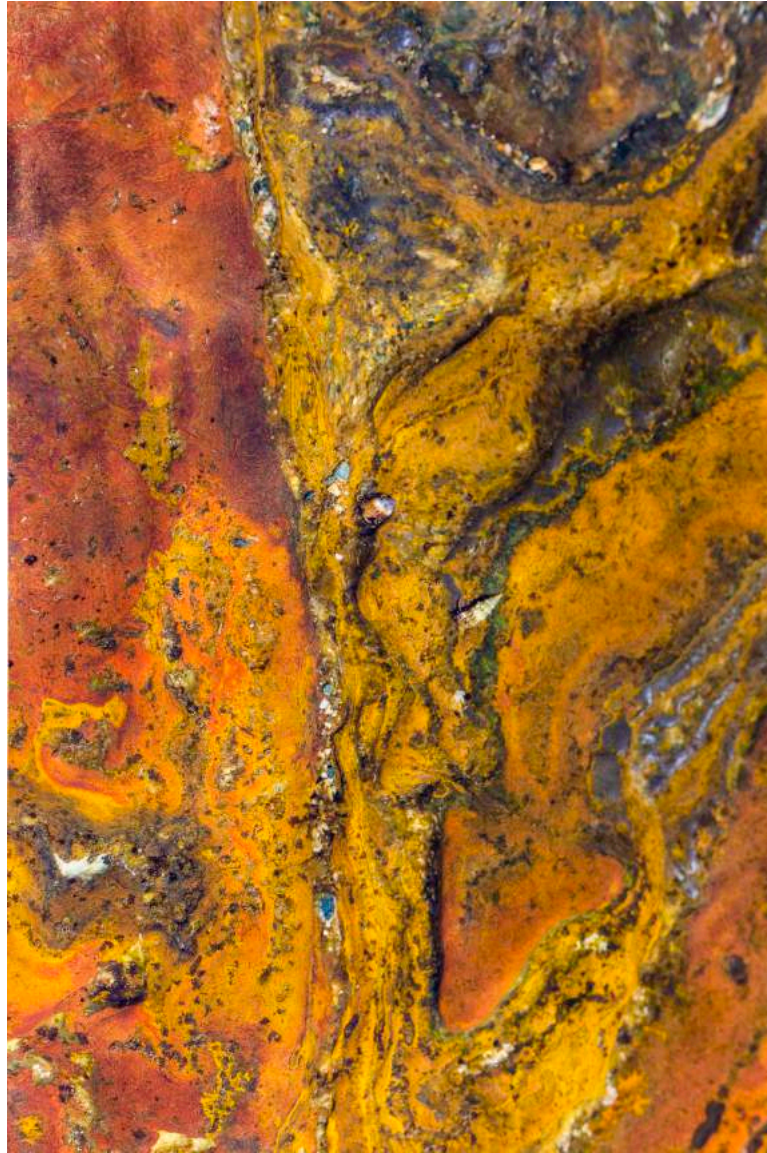
Feminine Energy. Alunite and Sulphur embed a Perlite rockface in Milos island to produce this abstract watercolour wonder. *Maximum recommended print size 120cm x 80cm. This image can be printed on Japanese Washi paper in 33cm x 48cm and 66cm x 96cm*



Masculine Energy. Alunite and Sulphur embed a Perlite rockface in Milos island to produce this abstract watercolour wonder. *Maximum recommended print size 120cm x 80cm. This image can be printed on Japanese Washi paper in 33cm x 48cm and 66cm x 96cm*



Non-binary Energy. Alunite and Sulphur embed a Perlite rockface in Milos island to produce this abstract watercolour wonder. *Maximum recommended print size 120cm x 80cm. This image can be printed on Japanese Washi paper in 33cm x 48cm and 66cm x 96cm*



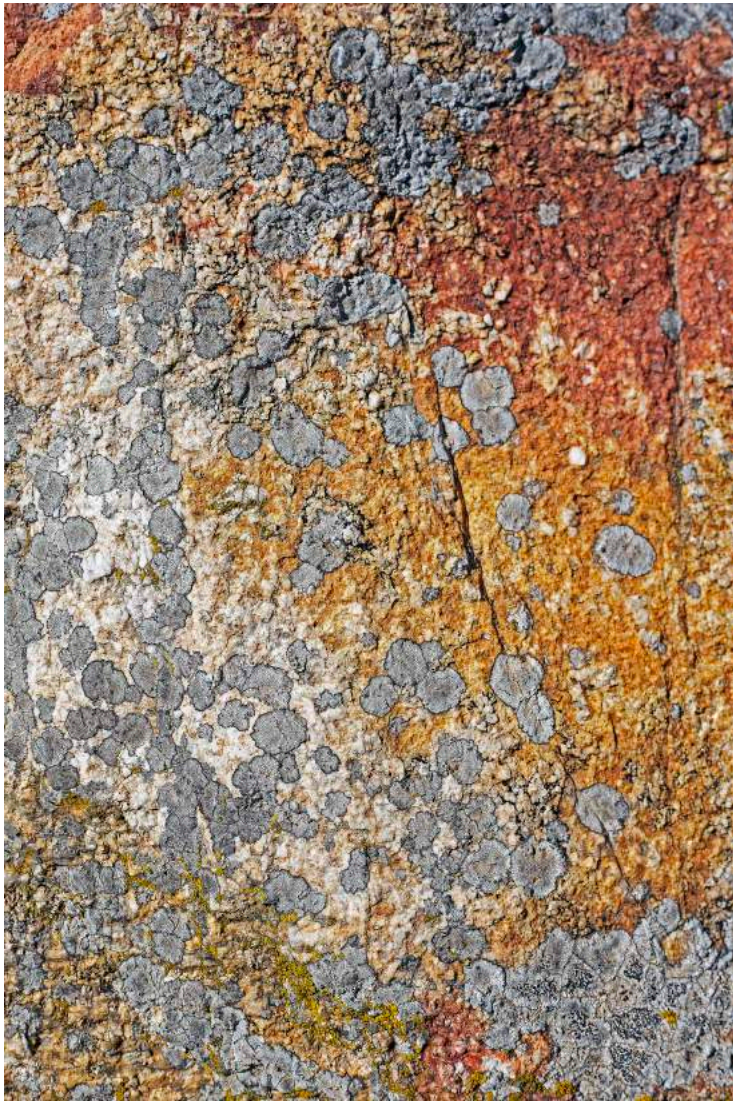
Underwater Lava Trail. Mineral littered lava comes alive again as the cool Aegean washes over it. *Maximum recommended print size 80cm x 120cm. This image can be printed on Japanese Washi paper in 33cm x 48cm and 66cm x 96cm*



Underwater Wonderland. On a breathless Spring day, just below the sea, shells, grains of sand, and mineral rich rocks light up the Myconian landscape. *Maximum recommended print size 80cm x 120cm. This image can be printed on Japanese Washi paper in 33cm x 48cm and 66cm x 96cm*



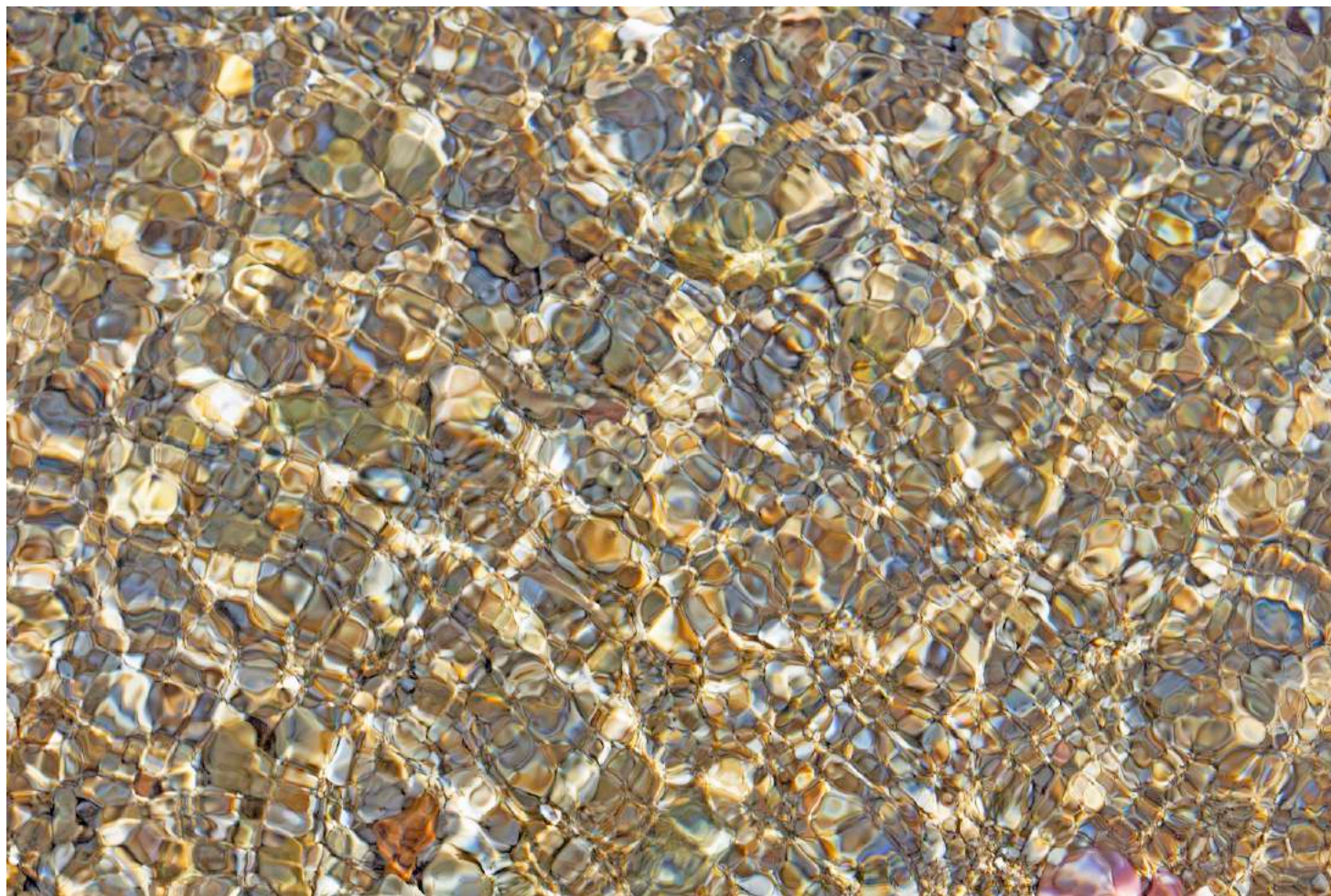
Snakeskin sea. Mineral rich rocks shimmer in the sun, just below the surface of the Aegean.
Maximum recommended print size 80cm x 120cm. This image can be printed on Japanese Washi paper in 33cm x 48cm and 66cm x 96cm



Silver Blossoms. Buds of silver blossoms shimmer amid a sunset granite backdrop. *Maximum recommended print size 80cm x 120cm. This image can be printed on Japanese Washi paper in 33cm x 48cm and 66cm x 96cm*



Pastel Rocks. The afternoon light produces pastel shades as it hits this mineral rich cubic rockface. *Maximum recommended print size 80cm x 60cm. This image can be printed on Japanese Washi paper in 33cm x 48cm and 66cm x 96cm*



Opal Aegean. A gentle South wind kisses the sea turning tiny pebbles into an Opal landscape.
Maximum recommended print size 80cm x 120cm. This image can be printed on Japanese Washi paper in 33cm x 48cm and 66cm x 96cm



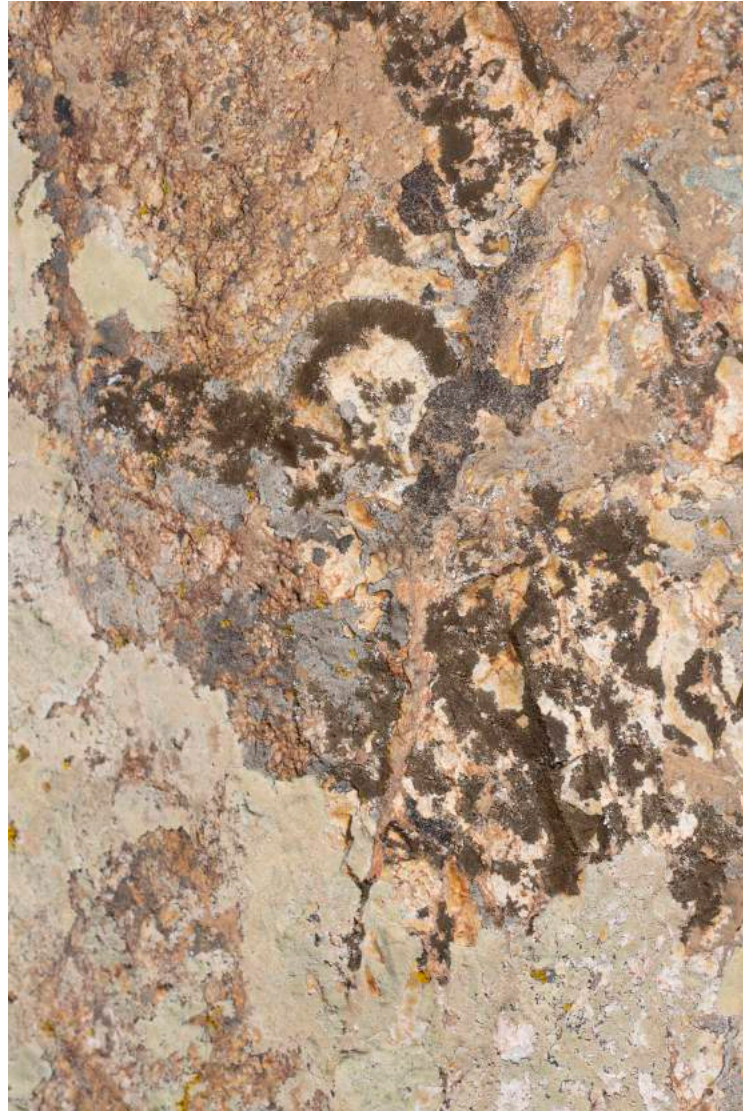
Humidity Garden. Silver and Platinum lichen elegantly clings to a granite and quartz rockface. Maximum recommended print size 80cm x 120cm. This image can be printed on Japanese Washi paper in 33cm x 48cm and 66cm x 96cm



Tree of Life. Life imitates art on this rusty granite boulder, forming a tree from its lichen growth. *Maximum recommended print size 80cm x 120cm. This image can be printed on Japanese Washi paper in 33cm x 48cm and 66cm x 96cm*



Goddess Rides Toro. Multi-coloured Tinos lichen produces a surrealistic image on this granite boulder. *Maximum recommended print size 80cm x 120cm. This image can be printed on Japanese Washi paper in 33cm x 48cm and 66cm x 96cm*



Granite growth. A myriad of cool lichen tones are in contrast to the warmth of this granite rockface. ***Maximum recommended print size 80cm x 120cm. [This image can be printed on Japanese Washi paper in 33cm x 48cm and 66cm x 96cm.](#)***



Black and Silver flowers . Pretty black and silver lichen flowers form to create art on a granite canvas. *Maximum recommended print size 40cm x 43cm. This image can be printed on Japanese Washi paper in 33cm x 48cm*



Delos Circles. Ancient marbles of Delos befittingly host these mythological 3D lichen circles.
Maximum recommended print size 80cm x 120cm. This image can be printed on Japanese Washi paper in 80cm x 64cm and 66cm x 96cm

Designed especially for you

We work with the best suppliers in the business, offering high quality state of the art print options for indoor and outdoor use, tailored to your specific requirements. Impressive and unique print materials include aluminium, plexiglass, new generation fine art papers, and a selection of canvases. If you're looking for a design concept that is deeply connection to the Cyclades we would be delighted to discuss bespoke print options including sizes, colour palettes, materials, framing, quantities, prices and timelines.

Limited Edition

A limited number of our individual images will be produced in each of the print material lines we offer, and prints will be individually numbered. Our images appear distinctly different on the diverse materials we have selected, and differ in price. All of our images will be limited as outlined below.

Chromaluxe Aluminium (all options)	500 per image
Acrylux	300 per image
All specialised fine art papers	1,000 per image
All canvas options	1,000 per image

**We reserve the right to produce limited number of fabrics utilising some of these images in the future.*

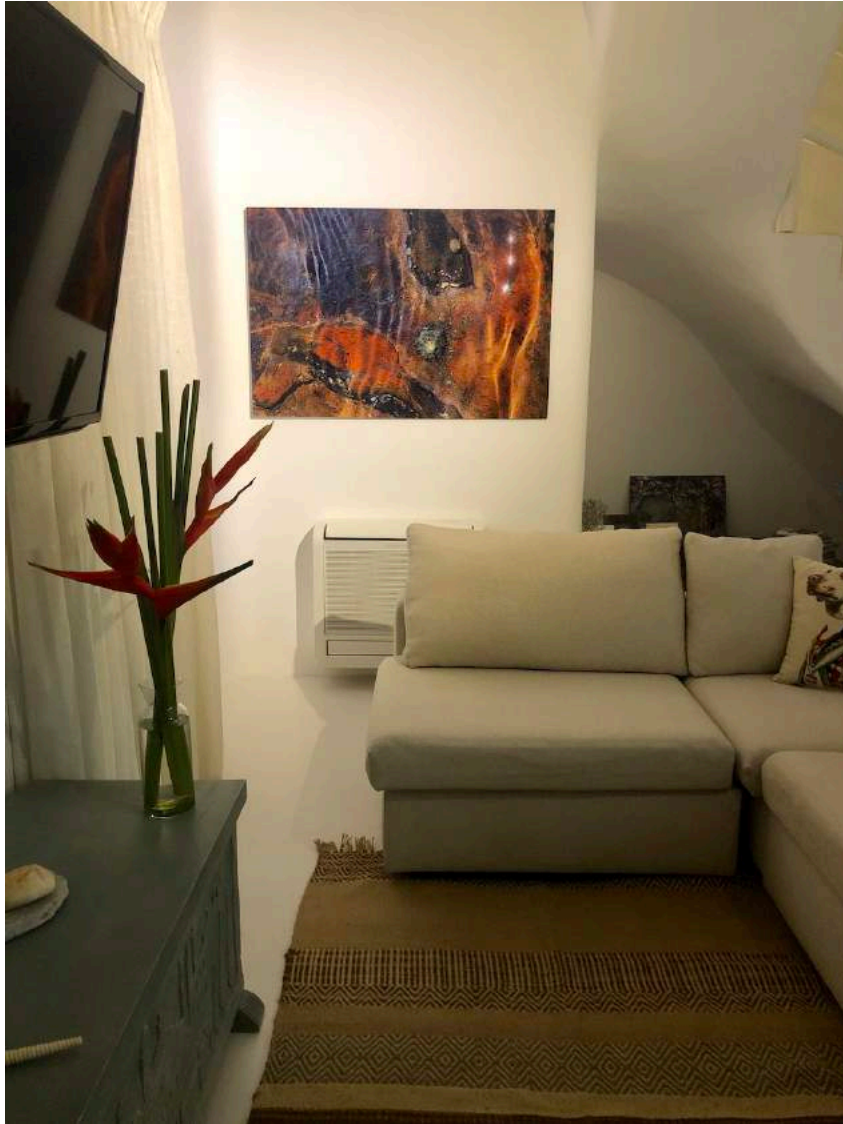
Print Sizes

Each of our prints can be produced in various sizes, however because of the nature of individual images, and to ensure the best overall impact, we recommend the largest size ordered doesn't exceed the maximum size quoted. You will find the maximum recommended print size outlined in the description for each image [previous pages].

Many of the images are photographed at maximum close range in order to capture unique natural images. In many cases the area photographed and edited is a tiny section of a larger less cohesive segment of landscape.

In regard to prints on Japanese Washi paper, at this stage there are only two print size options available (either *33cm x 48cm* or *66cm x 96cm*)

Images in Print – Chromoluxe aluminium



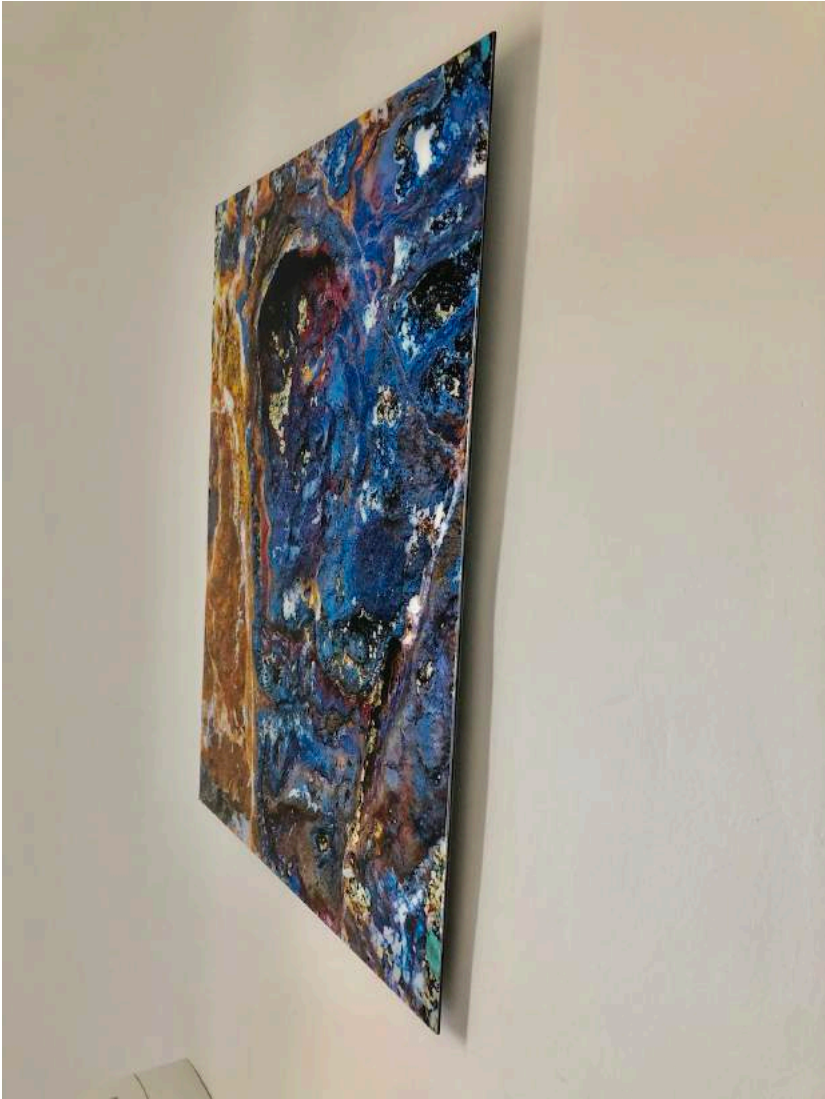
Images in Print – Crystal Gloss fine art paper, mounted on dibond board



Images in Print – Acrylux



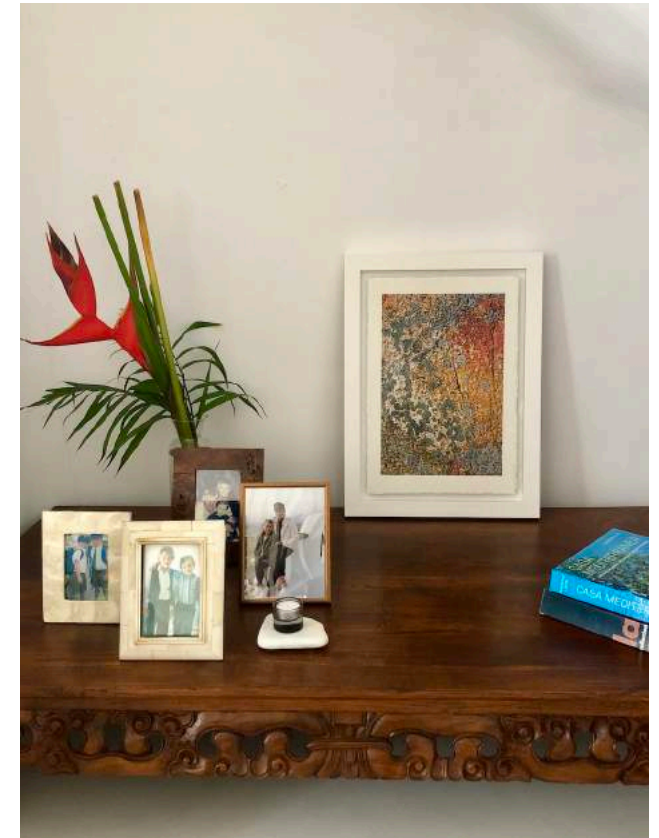
Images in Print – Chromaluxe Aluminium



Images in Print – Japanese Washi paper mounted on aluminium, in a floating frame

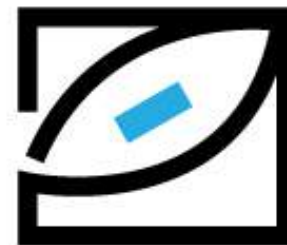


Images in Print – Japanese Washi paper mounted on aluminium, in a floating frame



Images in Print – Waterproof ink on canvas





MY MYKONOS EYE

Toni Atkinson

Phone: +30 698 950 2493

Email: toni@mymykonoseye.com



MyMykonosEye



My Mykonos Eye